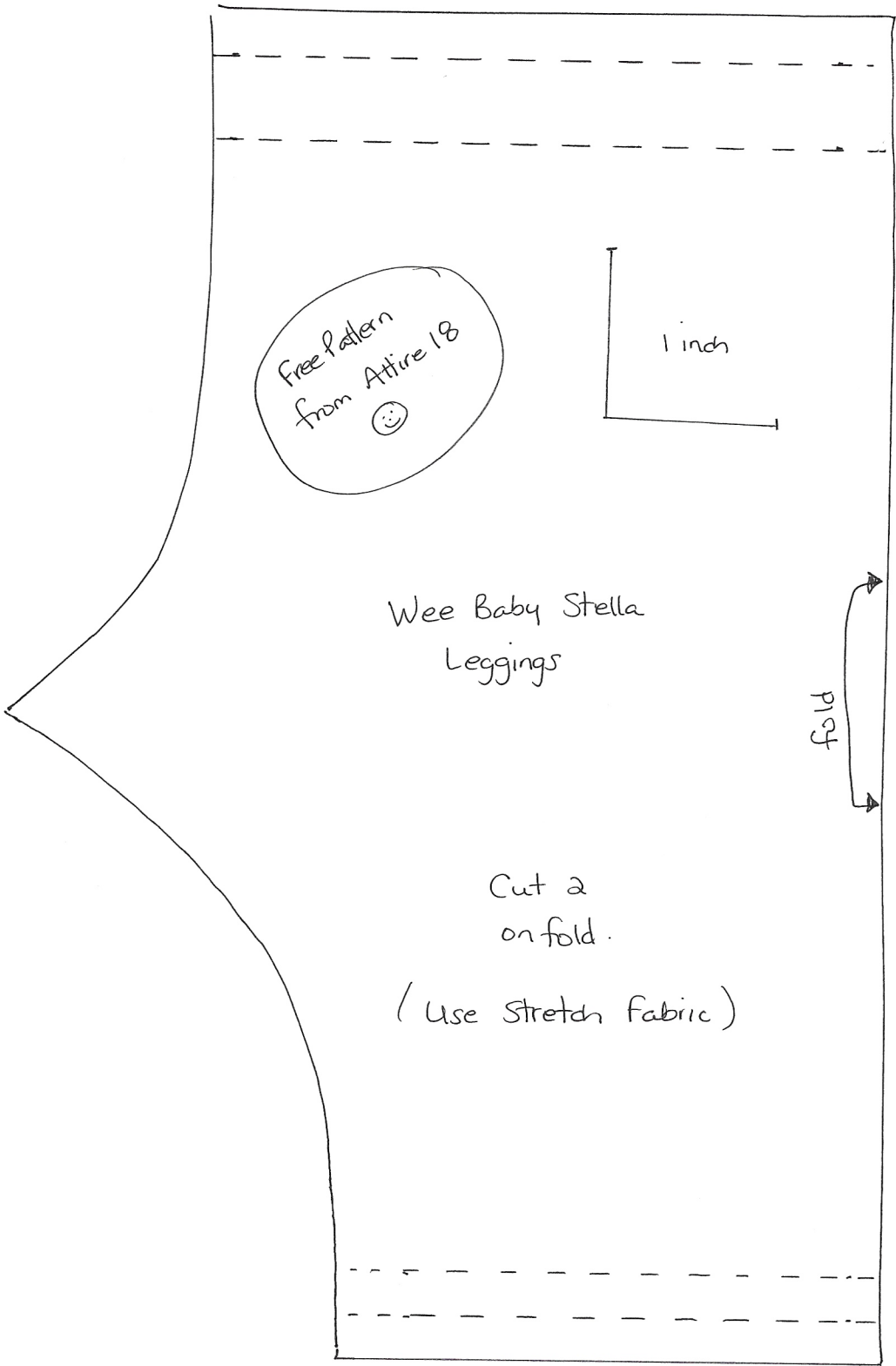


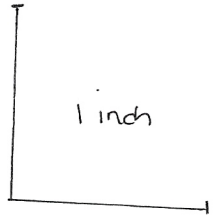
Wee Baby Stella - Leggings - Directions

- ① Sew center front seam
- ② Sew elastic casing by turning top edge over at $\frac{1}{4}$ inch and again at $\frac{1}{2}$ inch.
- ③ Cut piece of elastic ~~to~~ same measurement as waist. Insert in casing.
- ④ Sew center back seam.
- ⑤ Hem bottom leg edges by turning $\frac{1}{4}$ " twice
- ⑥ Sew center leg seams.

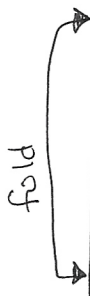




Free Pattern
from Attire 18
😊



Wee Baby Stella
Leggings



Cut 2
on fold.

(Use stretch fabric)