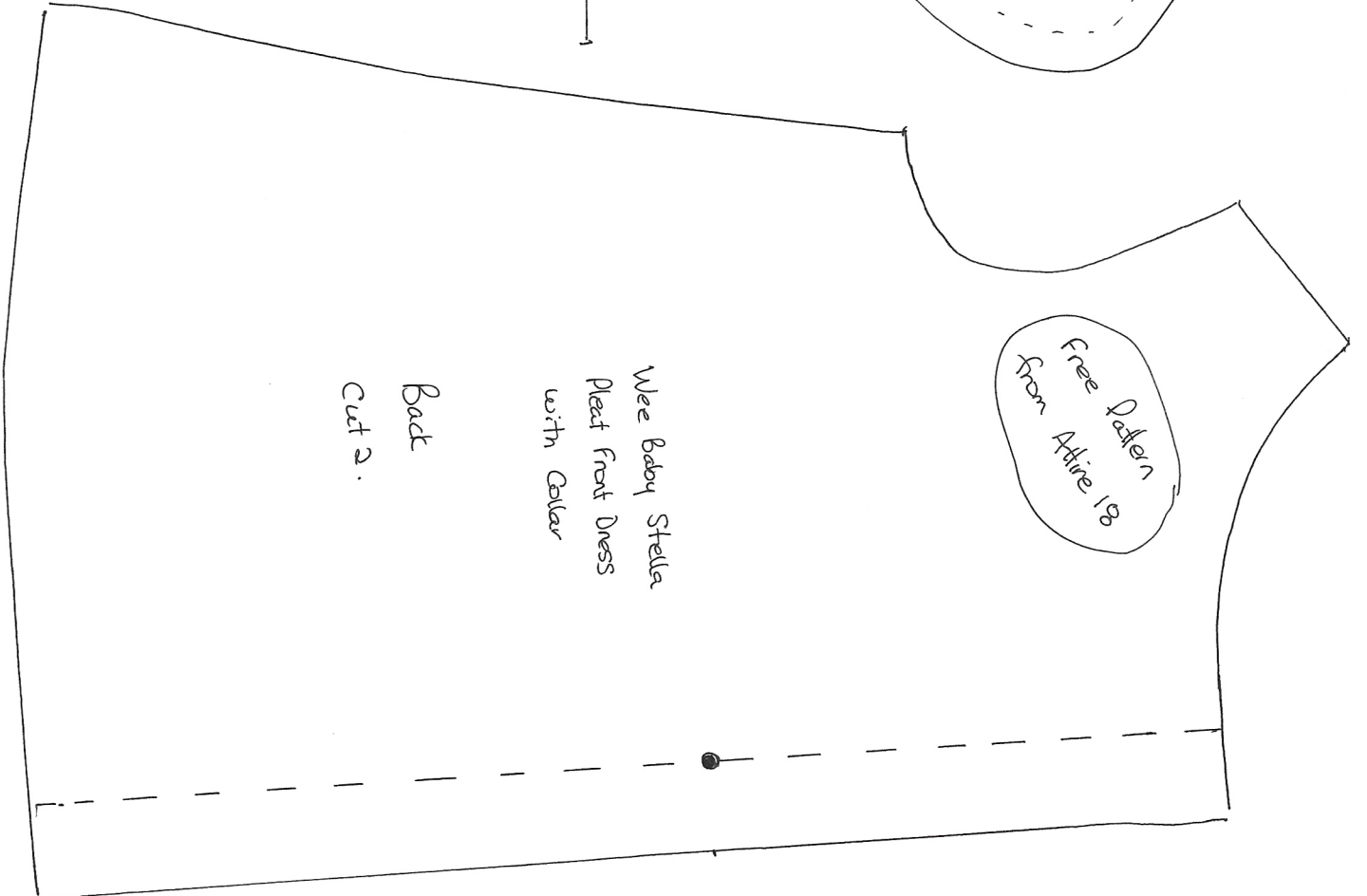
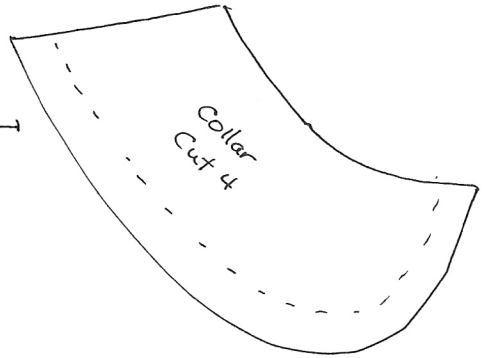
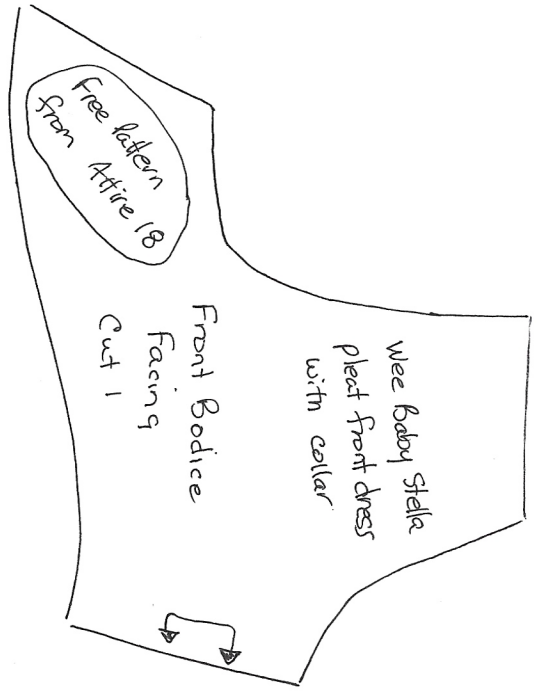


Wee Baby Stella - Pleated front Dress with Collar - Directions

- ① Fold front RS together and sew pleat from neck edge to ●. Press pleat open.
- ② ~~Sew dress front to back~~
- ② Sew curved edge of collar pieces. Clip curves and turn right side out press.
- ③ Baste collar to front making sure to have collar meet at center front.
- ④ Sew dress front to dress back at shoulders. (The collar edge will be in this seam as well. Repeat for ~~the~~ facing pieces.
- ⑤ Finish bottom edges of facing pieces with zig zag or serger.
- ⑥ Pin facing to dress with RS together. Sew neck edge and arm hole edges. ~~as well as~~ Clip Curves.
- ⑦ Sew center back to facing using a $\frac{1}{2}$ inch seam. Turn right side out. Back pieces will be pulled through the shoulder. Press.
- ⑧ finish back edge from edge of lining to hemline. Press under $\frac{1}{2}$ inch
- ⑨ Pin dress ~~to~~ front to back at side seams as well as ~~the~~ facing front to back. Sew seam.
- ⑩ Hem dress to desired length. I just used a $\frac{1}{4}$ " turn twice.
- ⑪ Apply closure (Velcro or KAM Snaps).



1 inch

Free Pattern
from
Attire 18

Wee Baby Stella
pleat front dress
with collar

Front

Cut 1 on fold

center front

fold

